

User Manual

DCORE



1. Precautions Before Installation

This section explains the basic safety guidelines users must follow to avoid harm during installation and use of the product. Please read carefully before beginning.

General precautions

During and after installation of the product, the area around the product must be kept clean and dust-free. Do not leave tools, cables, etc. in the aisle, as this may result in personal injury.

When installing the product, avoid wearing loose-fitting clothes, neckties, scarves, or sleeves that may get caught in the product.

Do not take any action that could cause damage to persons or equipment.

If you need to open the cover of the product to extend the product's performance or repair a malfunction, be sure to contact the place of purchase for professional help.

Power Precautions

When connecting power to the product, first check that the wiring is not overloaded.

When connecting the power to the product, do not wear jewelry such as rings, necklaces, or watches. If these accessories are connected to a power source or ground, there is a risk of burning the parts.

Always check the work area for potential hazards. Be sure to check for wet floors, ungrounded power extension cables, frayed internal power cords, and floors that do not have a safety grounding facility.

There must be an outlet near the appliance and the outlet must be easily accessible.

Install by service personnel and install the appliance so that it is connected to a socket-outlet with a protective earth wire



Before proceeding with hardware installation, turn off the power of the system to be installed, and then touch a grounded surface such as the metal side of the power supply to discharge static electricity from the body.

The manufacturer assumes no liability for direct or indirect damage resulting from the use of improper parts by unauthorized service personnel.

If power is supplied during installation, it may cause damage to system components and body.

Power

The power cord and power outlet act as the main power disconnect device in case of an emergency such as a fire, so do not stack or block objects in front of the power outlet so that you can unplug the power cord from the power outlet at any time.

**FCC Compliance Statement**

This device complies with part 15 of the FCC rules. Operation is subject to the following two conditions: (1) This device may not cause harmful interference, and (2) This device must accept any interference received, including interference that may cause undesired operation.

**CE Compliance Statement**

CE Marking is the symbol as shown on the left of this page. The letters "CE" are the abbreviation of French phrase "Conformité Européene" which literally means "European Conformity". The term initially used was "EC Mark" and it was officially replaced by "CE Marking" in the Directive 93/68/EEC in 1993. "CE Marking" is now used in all EU official documents.

**KCC Compliance Statement**

This device complies with KCC regulations. Operation conditions:

1. It must not cause harmful interference.
2. It must accept all interference received, including that which may cause undesired operation.



1. INTRODUCTION

DCORE is a decoder device that receives NDI or real-time video streams over a network. It decodes Full NDI, NDI HX2/3, SRT, RTMP(S), and RTSP video streams, outputting them to HDMI display devices.

4K 30P Decoding	To decode H.264/HEVC video and AAC audio at up to 4K resolution from IP Network, specialized equipment is needed.
Webserver	The SalrayFinder APP is designed to simplify the management of NDI devices by retrieving their current IP addresses and enabling remote control and monitoring via a web server. Provides a centralized interface for managing the settings and monitoring the performance.



Contents

- 1. Product Introduction ----- 05
- 2. Interface ----- 06
- 3. Specifications ----- 07
- 4. SalrayFinder ----- 08
- 5. Web Interfaces ----- 09
 - 5.1 Home----- 10
 - 5.2 Decoder ----- 11
 - 5.3 NDI ----- 12
 - 5.4 Network Menu ----- 13
 - 5.5 Firmware ----- 14
 - 5.6 License ----- 15
 - 5.7 Account ----- 16

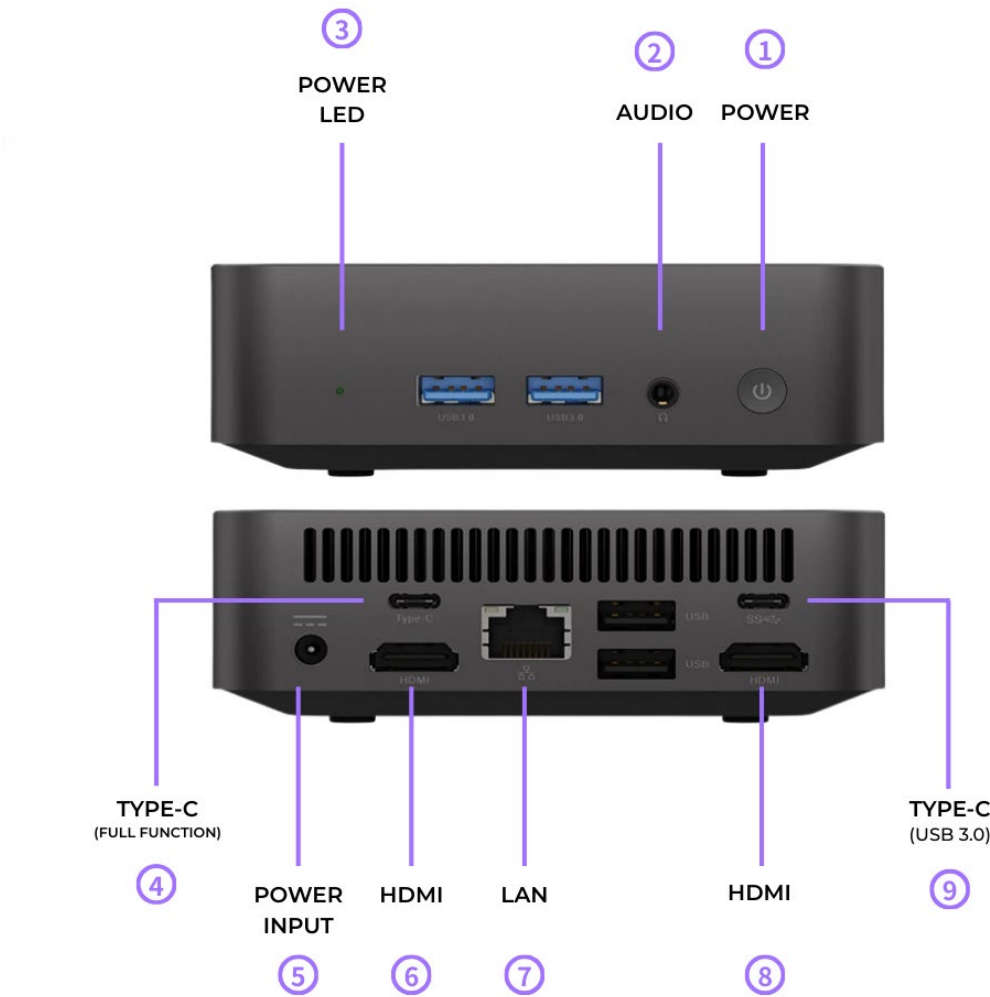
1. Product Introduction

DCORE decodes streams received via NDI HX2/NDI HX3/SRT/RTMP/RTMPS/RTSP protocols and outputs the decoded video and audio data through HDMI. It can decode video streams up to 1080P 60fps (4K 30fps).

- **Product Features**

- ① Supports H.264 and HEVC
- ② Up to 1080P 60fps (4K 30fps)
- ③ Supports Full NDI, NDI HX2/3, SRT, RTMP/RTMPS, RTSP
- ④ Supports NDI Discovery Server
- ⑤ Supports video output scaling
- ⑥ Interfaces: 2 × Type-C, 2 × HDMI, 3.5mm audio jack
- ⑦ Audio volume control & mute
- ⑧ Web interface support

2. Interface



- | | |
|------------------------------------|-----------------|
| 1. Power | 7. LAN |
| 2. External Audio | 8. HDMI |
| 3. Power LED | 9. Type-C (USB) |
| 4. Type-C (Full function, USB 3.0) | |
| 5. Power Input | |
| 6. HDMI | |

3. Dimensions

Video/Audio Output

2 * Type-C, 2 * HDMI

Audio Output

3.5mm Audio Jack

Ethernet : (Gigabit) x 1

- 10M/100M/1000M RJ45

Electrical

Power Adaptor: (5.5mm × 2.5mm)

Power Consumption: 12V 3A 36W adapter

Physical

Dimensions: 112 × 112 × 38 mm

Weight: 0.36 kg

4. SALRAY FINDER

SalrayFinder allows you to discover Salrayworks NDI devices on the same network and find their IP addresses, MAC addresses, change their hostname or IP settings, and restart the devices. It also enables resetting the web server password. By clicking on the IP address, you can access the web server.

Devices

Network interfaces

192.168.0.177

APPLY

HOST	IP	MAC	ACTION
DCORE	192.168.0.70 ✓	20:24:11:21:02:78	<div><div></div><div></div><div></div></div>
DCORE	192.168.0.100 ✓	a4:a4:d3:1a:c4:be	<div><div></div><div></div><div></div></div>
MOONYEOM	192.168.0.168 ✓	9C-6B-00-08-13-E8	<div><div></div><div></div><div></div></div>
SHARON	192.168.0.30 ✓	04:91:62:d4:e7:1e	<div><div></div><div></div><div></div></div>
NDOR	192.168.0.66 ✓	d8:47:8f:91:c0:c4	<div><div></div><div></div><div></div></div>

Rows per page:

10

1-5 of 5

<

>

SalrayFinder Download

WINDOW Version

[SalrayFinder](#) Windows



MAC Version

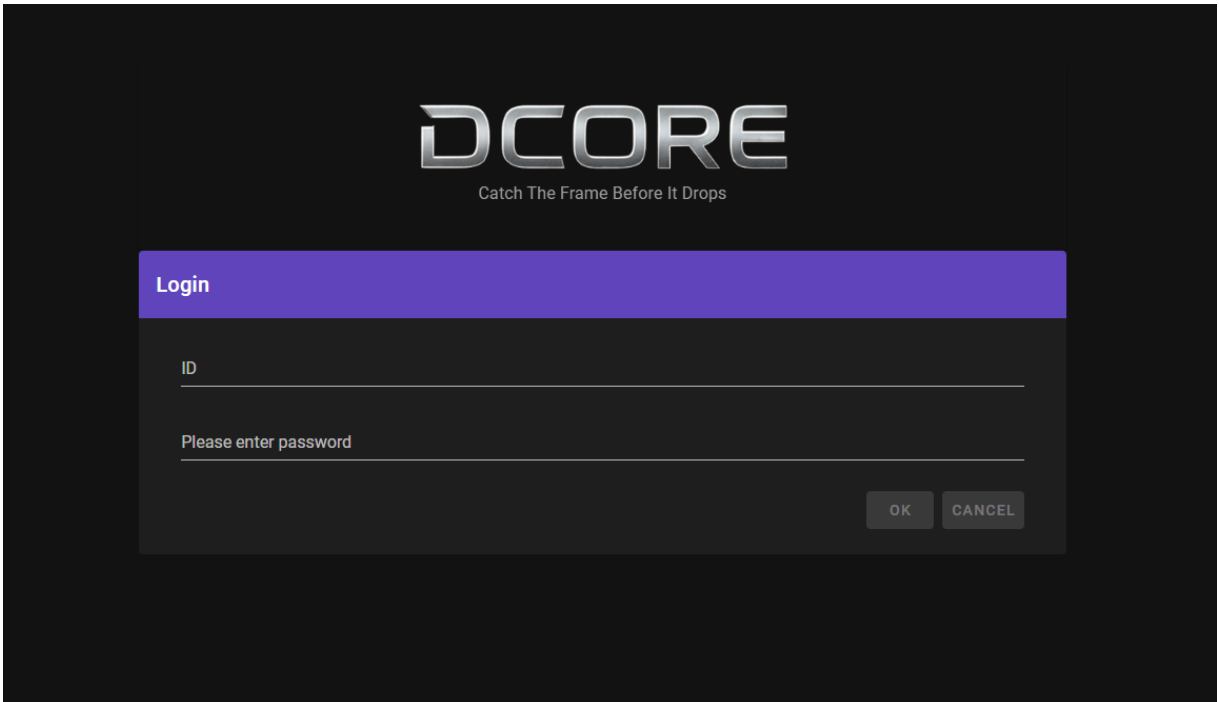
[SalrayFinder](#) macOS



5. Web Interfaces

DCORE provides a simple yet intuitive web interface that allows you to monitor the device status and configure its operating settings.

You can access the login screen by selecting the **DCORE** device in SalrayFinder or by entering the device’s IP address directly into a web browser.
The default ID and PASSWORD are: admin.

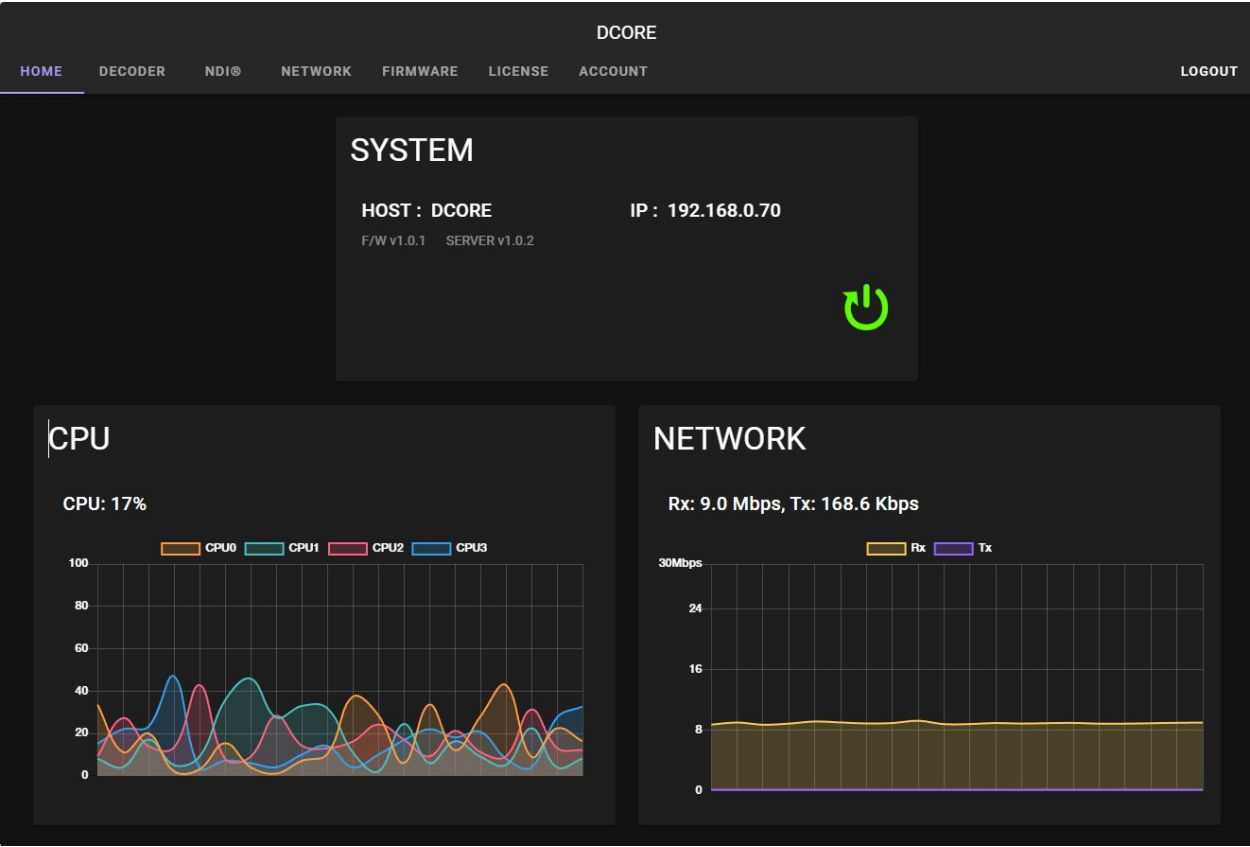


5.1 Home

Displays the basic information and operating status of DCore, including:

- Device hostname and Ethernet IP address
- Installed firmware and web server version information
- CPU load and network input/output traffic
- **[Reboot]** button

When the **[Reboot]** button is pressed, DCore will restart.



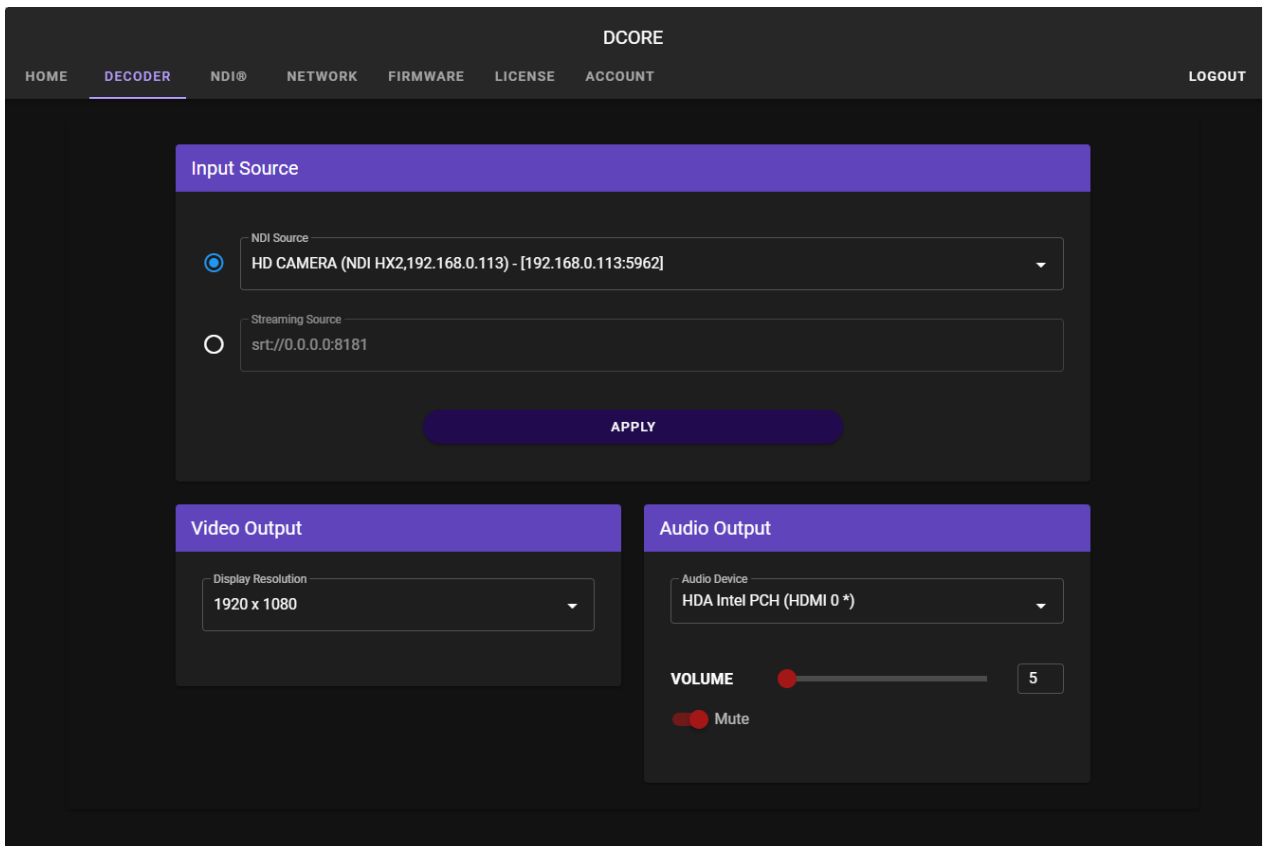
5.2 DECODER

You can configure the operating settings of DCORE, including:

- Input source for playback (NDI source or streaming source)
- Output video resolution
- Output audio device
- Audio volume control / mute

For **NDI Source**, a list of available NDI streams is displayed. Select the desired stream and click the **[Apply]** button to apply the settings.

For **Streaming Source**, enter the SRT, RTMP(S), or RTSP URL. In the case of **SRT**, it operates in **listener mode**, so you must specify the port number following srt://0.0.0.0:8181. Changes related to video and audio output are applied immediately.



DCORE

HOME DECODER NDI NETWORK FIRMWARE LICENSE ACCOUNT LOGOUT

Input Source

☒ NDI Source
 HD CAMERA (NDI HX2,192.168.0.113) - [192.168.0.113:5962]

☐ Streaming Source
 srt://0.0.0.0:8181

APPLY

Video Output

Display Resolution
1920 x 1080

Audio Output

Audio Device
HDA Intel PCH (HDMI 0 *)

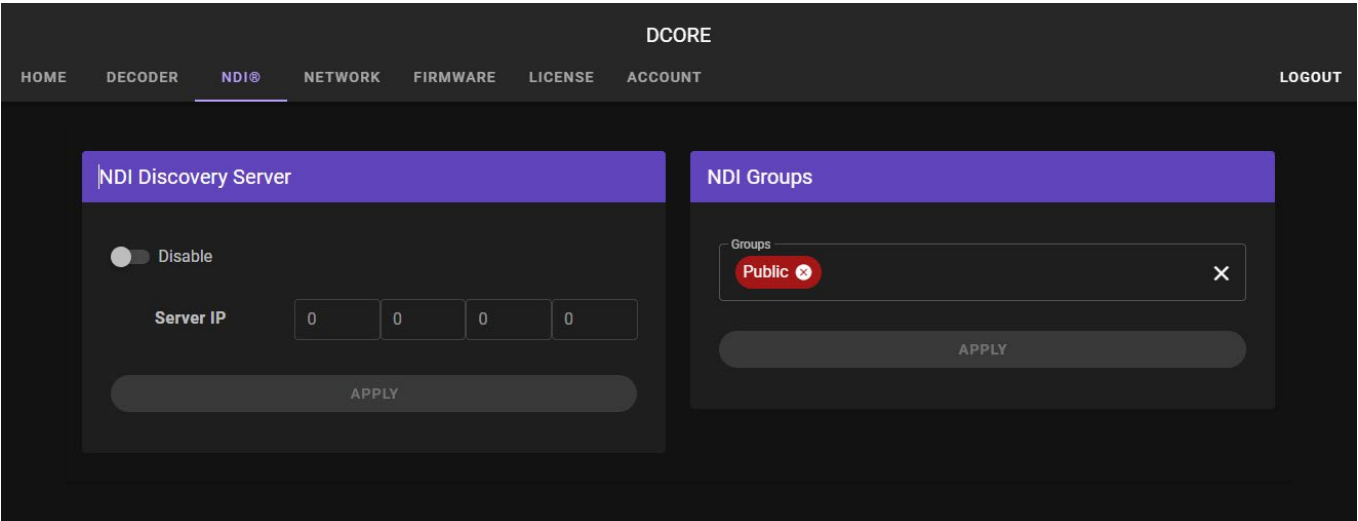
VOLUME 5

☒ Mute

5.3 NDI

You can configure the NDI Discovery server and NDI groups.
After performing these settings, DCore will reboot to apply the newly configured values.

After changes, DCore reboots to apply settings.





5.4 NETWORK

You can configure the hostname and Ethernet IP address of DCORE.

DCORE

HOME

DECODER

NDI®

NETWORK

FIRMWARE

LICENSE

ACCOUNT

LOGOUT

HOSTNAME

Hostname
DCORE

APPLY

IP

☒ Static

IP

192168070

Netmask

2552552550

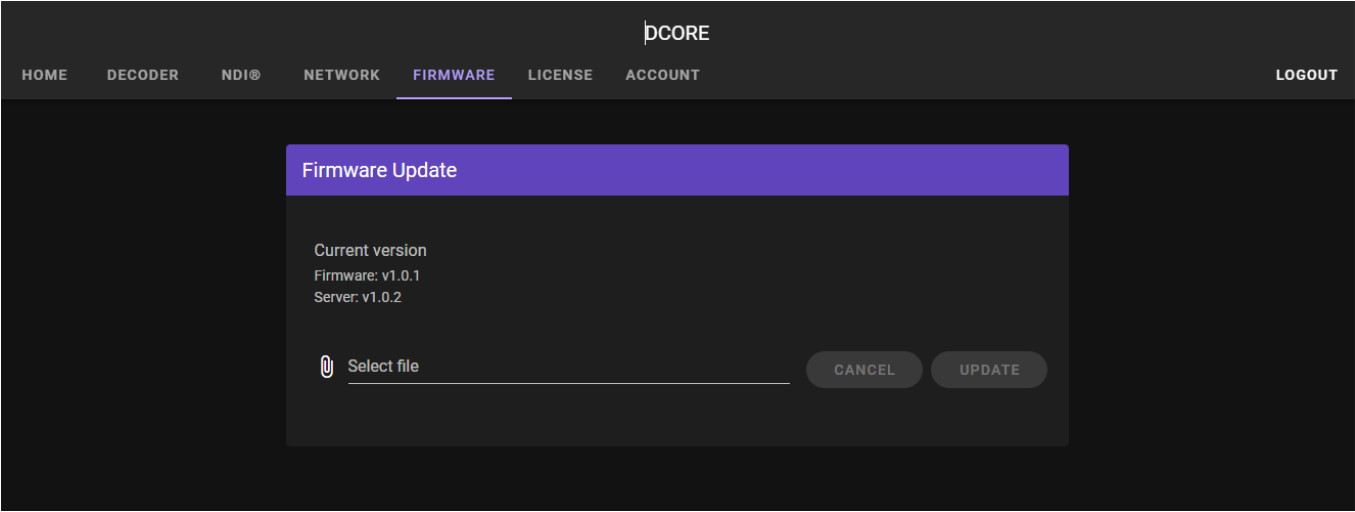
Gateway

19216801

APPLY

5.5 FIRMWARE

You can update the firmware and web server of **DCORE** to the latest version. When you perform an update using the latest update file provided by the manufacturer, **DCORE** will reboot and the update process will begin. After the update is completed, check the firmware and web server version to ensure that the update has been applied correctly.





5.6 LICENSE

A valid license is required for **DCORE** to operate properly. The license consists of a Device Key and a Product Key.

- The Device Key is automatically assigned by the unit and is required for issuing a Product Key.
- If the Product Key is missing or invalid, video output from **DCORE** will be disabled.

If you do not have a license, please contact the manufacturer to obtain a valid license.

DCORE

HOMEDECODERNDI@NETWORKFIRMWARELICENSEACCOUNTLOGOUT

License Info

Your license has been successfully validated.

Device Key:

Product Key:

APPLY



5.7 ACCOUNT

You can change the password in use.

Enter the current password and the new password to set your desired password.

DCORE

HOMEDECODERNDI@NETWORKFIRMWARELICENSEACCOUNTLOGOUT

Change Password

Current Password

Current password

New Password

New password

Confirm password

CONFIRM

CANCEL